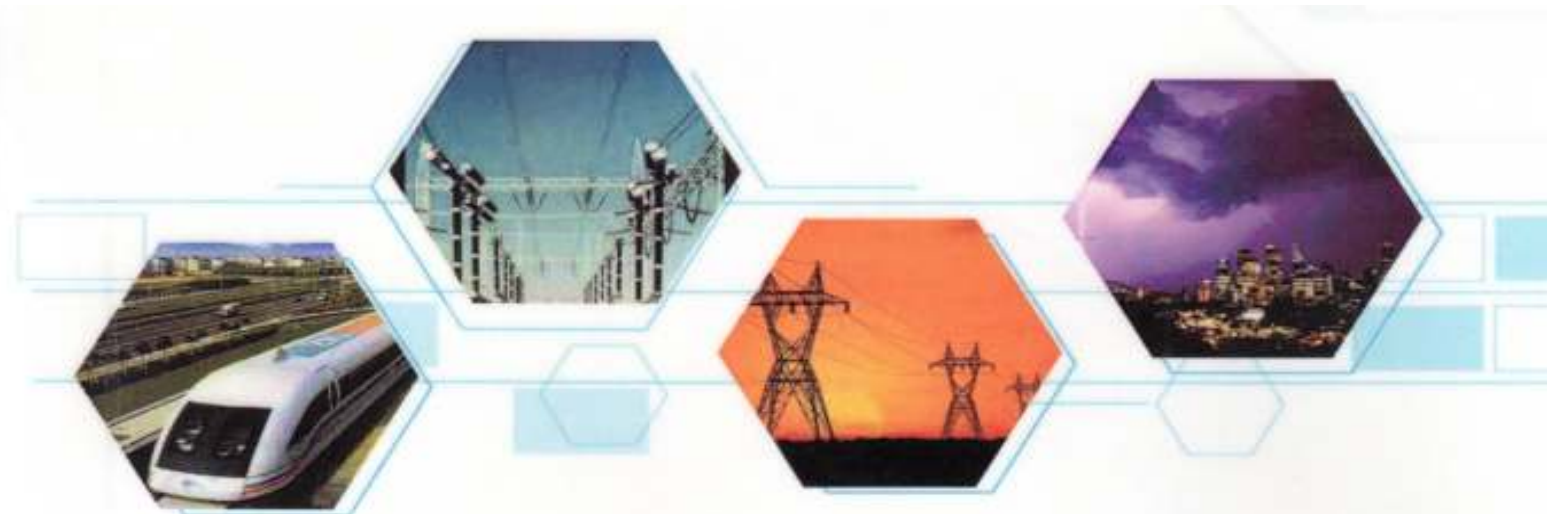
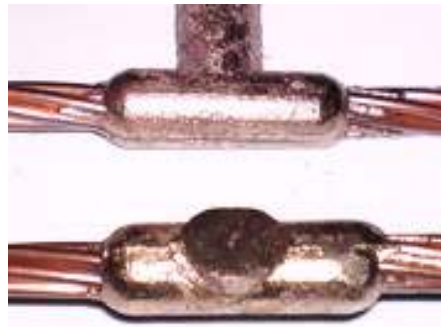


EXOTHERMIC WELDING CONNECTION

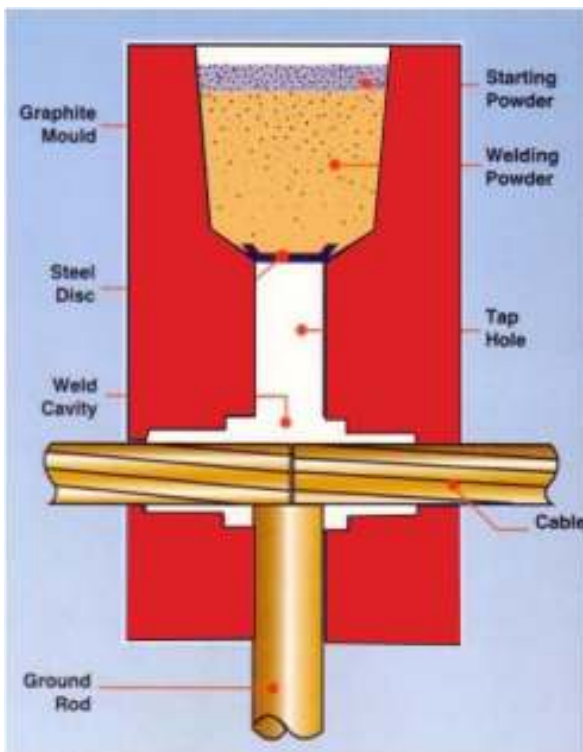


Manufacturing of the Exothermic welding powder, Graphite Mould, One time Ceramic Mould, Ductseal and equipment for Electric, Utility, Telecom, Cathodic, and Rail Markets with the high quality and lowest price on the complete cycle of the Grounding & Lightning protection system, Industrial Buildings and Telecom, Lightning Protection, Grounding Products, Cathodic, Government as well as many other grounding needs.



WELDING METHOD

LEEWELDS Exothermic Welding process is a molecular chemical reaction between copper oxide and aluminum, generates a tremendous superheat with molten metals reaching approximately temperatures of 4,000°F (2,600°C). The process can be completed itself automatically without external source of powder or heat.



COMPLETE CONNECTION

WELD POWDER

The welding powder consists of copper oxide and aluminum which is measure into specific weight in grams for the connections should be made approximately 97 % of the contents of this cartridge is the weld metal, the remaining part is a starting powder which is tamped into the bottom of the each cartridge.



Code	Size	Tubes/Box
LW15	15g.	30
LW25	25g.	20
LW32	32g.	20
LW45	45g.	20
LW65	65g.	20
LW90	90g.	10
LW115	115g.	10
LW150	150g.	10
LW200	200g.	10
LW250	250g.	10

- ✓ **1. A** smooth metal connection that will not loosen or corrode.
- ✓ **2. IT** is not affected by high current surge or over current.
- ✓ **3. NO** needfor the external welding machine.
- ✓ **4. USE** only lightweight and cheap equipment.
- ✓ **5. Virtually** maintenance –free



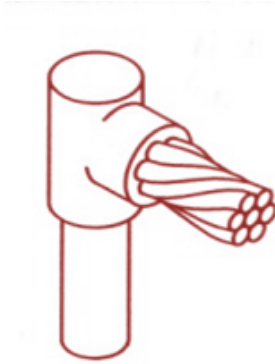
ONETIME CERAMIC

The LEEWELDS ONE TIME system is a cost effective solution when only a small number of joints are required. Unlike the graphite mould, the ONE TIME mould are single-use and are disposed of, or buried in place, with the joint once completed.



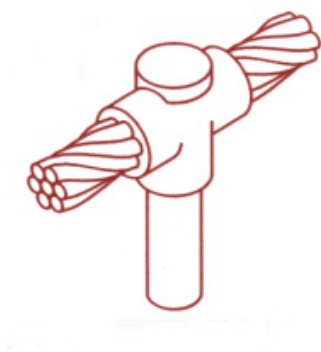
ONETIME CERAMIC

One Way Cable To Rod



CODE NO.	Cable Size	Powder (g)
GO 116	16	45
GO 125	25	45
GO 135	35	65
GO 150	50	65
GO 170	70	90
GO 195	95	90
GO 1120	120	90
GO 1150	150	250
GO 1185	185	150
GO 1240	240	200
GO 1300	300	250

Two Way Cable To Rod



CODE NO.	Cable Size	Powder (g)
GTW 216	16	45
GTW 225	25	45
GTW 235	35	65
GTW 250	50	65
GTW 270	70	90
GTW 295	95	90
GTW 2120	120	90
GTW 2150	150	250
GTW 2185	185	250
GTW 2240	240	250
GTW 2300	300	300



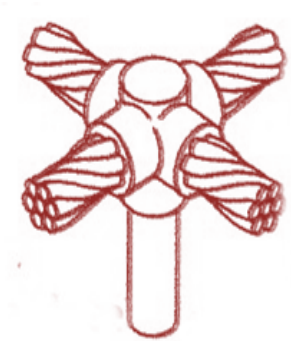
ONETIME CERAMIC

Three Way Cable To Rod



CODE NO.	Cable Size	Powder (g)
GTH 316	16	45
GTH 325	25	45
GTH 335	35	65
GTH 350	50	65
GTH 370	70	90
GTH 395	95	90
GTH 3120	120	90
GTH 3150	150	250
GTH 3185	185	250
GTH 3240	240	250
GTH 3300	300	350

Four Way Cable To Rod

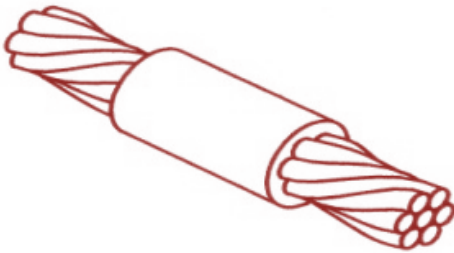


CODE NO.	Cable Size	Powder (g)
GF416	16	45
GF425	25	45
GF435	35	65
GF450	50	65
GF470	70	90
GF495	95	90
GF4120	120	90
GF4150	150	250
GF4185	185	250
GF4240	240	300
GF4300	300	350



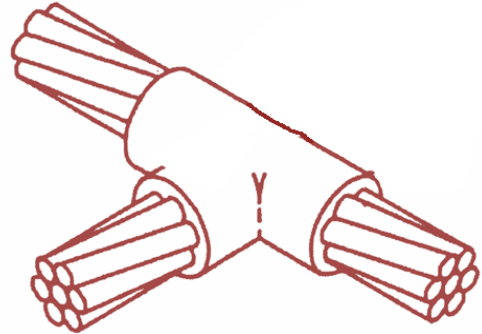
ONETIME CERAMIC

TWO WAY CABLE TO CABLE



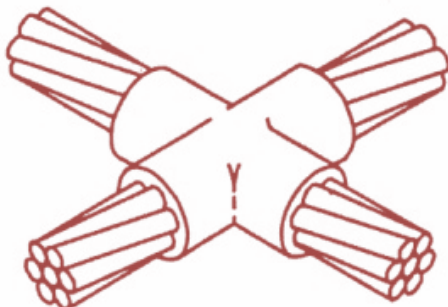
CODE NO.	Cable Size	Powder (g)
CTW 216	16	45
CTW 225	25	45
CTW 235	35	65
CTW 250	50	65
CTW 270	70	90
CTW 295	95	90
CTW 2120	120	90
CTW 2150	150	250
CTW 2185	185	250
CTW 2240	240	250
CTW 2300	300	250

THREE WAY CABLE TO CABLE



CODE NO.	Cable Size	Powder (g)
CTH 316	16	45
CTH 325	25	45
CTH 335	35	65
CTH 350	50	65
CTH 370	70	90
CTH 395	95	90
CTH 3120	120	90
CTH 3150	150	250
CTH 3185	185	250
CTH 3240	240	250
CTH 3300	300	300

FOUR WAY CABLE TO CABLE



CODE NO.	Cable Size	Powder (g)
CF 416	16	45
CF 425	25	45
CF 435	35	65
CF 450	50	65
CF 470	70	90
CF 495	95	90
CF 4120	120	90
CF 4150	150	250
CF 4185	185	250
CF 4240	240	250
CF 4300	300	300

