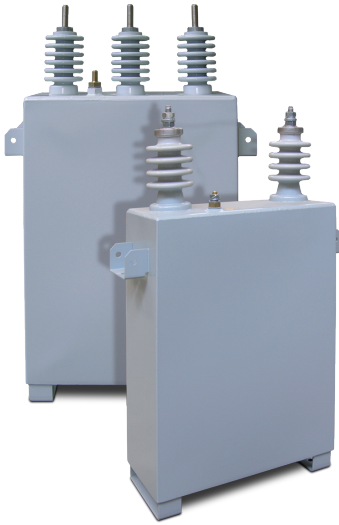


CHV-T

Three-phase capacitor (indoor and outdoor use)



Description

CHV medium-voltage capacitors, made up of different basic capacitive elements. These basic units are connected in series and parallel with the purpose of obtaining the power at the necessary voltage.

All the elements are protected by an internal fuse. This fuse is disconnected if a fault is detected, isolating only the basic unit that has been damaged. Internal fuse protection ensures greater system safety and service continuity.

Application

CHV-T capacitors are used to build static and automatic capacitor banks of up to 12 kV.

The stainless-steel box of the **CHV-T** makes it a versatile product that can be used in indoor and outdoor applications.

Technical features

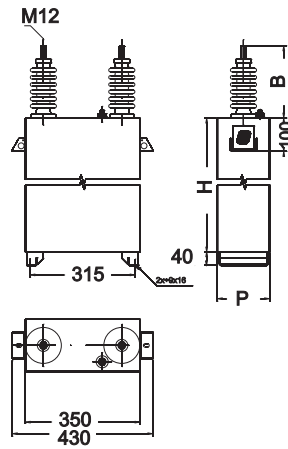
Electrical features	Voltage	1...12 kV
	Nominal power	25...750 kvar
	Frequency	50 or 60 Hz
	Dielectric losses	≤ 0.15 W / kvar
	Capacity tolerance	-5%...+10%
	Location	Indoor / Outdoor
	Protection	Internal fuse (depending on the type)
Discharge resistance (in compliance with IEC 60871-1)	Location	Interior
	Discharge time	≤ 10 minutes *
	Residual voltage	≤ 75 V *
Insulators	Material	Porcelain
	Pollution level	16 mm / kV (other leakage lines, on demand)
	Insulation level	7.2 - 12 kV
Overload	In current	1.3 I _n permanent
	In voltage	1.1 U _n 12 h in 24 hours
		1.15 U _n 30 min in 24 hours
		1.2 U _n 5 min in 24 hours
1.30 U _n 1 min in 24 hours		
Environmental conditions	Operating temperature	Category C (in accordance with IEC 60871-1)
	Maximum temperature (*2)	50 °C
	Mean maximum value over 24 hours	40 °C
	Mean maximum value over 1 year	30 °C
Build features	Dielectric	Rough polypropylene film
	Electrode	Laser-cut aluminium sheet
	Saturant oil	SAS-40E or M/DBT (PCB-free)
	Dimensions (mm)	depending on the type
	Weight	depending on the type (see table)
	Box	Painted stainless steel, RAL 7035 Features two flanges for attaching to the frame and avoiding mechanical efforts on the porcelain terminals
	Assembly position	Horizontal or vertical
	Pressure switch	Optional
Standards	IEC 60871-1, IEC 60871-4	

(*) Please ask for other features or configurations (*2) This is assumed to be an isolated case.

CHV-T

Three-phase capacitor (indoor and outdoor use)

References



BIL 20/60 kV (50 Hz) - 3.3 kV					
Type	Code	kvar	Weight	Dimensions (mm) width x height x depth.	
CHV-T 50/3.3 *	R8K0500003300	50	18.8 kg	350 x 422 x 160	
CHV-T 75/3.3 *	R8K0750003300	75	22.4 kg	350 x 472 x 160	
CHV-T 100/3.3 *	R8K1000003300	100	22.8 kg	350 x 472 x 160	
CHV-T 121/3.3 *	R8K1210003300	121	26.3 kg	350 x 522 x 160	
CHV-T 150/3.3 *	R8K1500003300	150	30.0 kg	350 x 572 x 160	
CHV-T 200/3.3 *	R8K2000003300	200	34.4 kg	350 x 632 x 160	
CHV-T 242/3.3 *	R8K2420003300	242	45.6 kg	350 x 802 x 160	
CHV-T 250/3.3 *	R8K2500003300	250	45.7 kg	350 x 802 x 160	
CHV-T 300/3.3 *	R8K3000003300	300	46.7 kg	350 x 802 x 160	
CHV-T 363/3.3 *	R8K3630003300	363	55.6 kg	350 x 862 x 175	
CHV-T 400/3.3	R8K4000003300	400	58.3 kg	350 x 892 x 175	
CHV-T 484/3.3	R8K4840003300	484	67.2 kg	350 x 1002 x 175	
CHV-T 500/3.3	R8K5000003300	500	69.4 kg	350 x 1032 x 175	
CHV-T 600/3.3	R8K6000003300	600	81.2 kg	350 x 1182 x 175	
CHV-T 750/3.3	R8K7000003300	700	97.3 kg	350 x 1252 x 200	
BIL 20/60 kvar (50 Hz) - 6.6 kV					
CHV-T 50/6.6 *	R8K0500006600	50	19.2 kg	350 x 422 x 160	
CHV-T 75/6.6 *	R8K0750006600	75	22.6 kg	350 x 472 x 160	
CHV-T 100/6.6 *	R8K1000006600	100	23.0 kg	350 x 472 x 160	
CHV-T 121/6.6 *	R8K1210006600	121	26.5 kg	350 x 522 x 160	
CHV-T 150/6.6 *	R8K1500006600	150	30.2 kg	350 x 572 x 160	
CHV-T 200/6.6	R8K2000006600	200	38.3 kg	350 x 692 x 160	
CHV-T 242/6.6	R8K2420006600	242	45.8 kg	350 x 802 x 160	
CHV-T 250/6.6	R8K2500006600	250	45.9 kg	350 x 802 x 160	
CHV-T 300/6.6	R8K3000006600	300	46.9 kg	350 x 802 x 160	
CHV-T 363/6.6	R8K3630006600	363	55.9 kg	350 x 862 x 175	
CHV-T 400/6.6	R8K4000006600	400	58.6 kg	350 x 892 x 175	
CHV-T 484/6.6	R8K4840006600	484	67.4 kg	350 x 1002 x 175	
CHV-T 500/6.6	R8K5000006600	500	69.7 kg	350 x 1032 x 175	
CHV-T 600/6.6	R8K6000006600	600	81.2 kg	350 x 1182 x 175	
CHV-T 750/6.6	R8K7000006600	700	97.6 kg	350 x 1252 x 200	
BIL 28/75 kvar (50 Hz) - 11 kV					
CHV-T 50/11 *	R8L0500011000	50	19.3 kg	350 x 422 x 160	
CHV-T 75/11 *	R8L0750011000	75	22.7 kg	350 x 472 x 160	
CHV-T 100/11 *	R8L1000011000	100	23.0 kg	350 x 472 x 160	
CHV-T 121/11 *	R8L1210011000	121	26.4 kg	350 x 522 x 160	
CHV-T 150/11 *	R8L1500011000	150	30.1 kg	350 x 572 x 160	
CHV-T 200/11 *	R8L2000011000	200	34.4 kg	350 x 632 x 160	
CHV-T 242/11	R8L2420011000	242	45.6 kg	350 x 802 x 160	
CHV-T 250/11	R8L2500011000	250	45.7 kg	350 x 802 x 160	
CHV-T 300/11	R8L3000011000	300	46.5 kg	350 x 802 x 160	
CHV-T 363/11	R8L3630011000	363	53.0 kg	350 x 892 x 175	
CHV-T 400/11	R8L4000011000	400	56.1 kg	350 x 862 x 175	
CHV-T 484/11	R8L4840011000	484	66.8 kg	350 x 1002 x 175	
CHV-T 500/11	R8L5000011000	500	67.0 kg	350 x 1002 x 175	
CHV-T 600/11	R8L6000011000	600	80.7 kg	350 x 1182 x 175	
CHV-T 750/11	R8L7000011000	700	92.1 kg	350 x 1192 x 200	

(*) No internal fuses
Other power ratings, please consult.